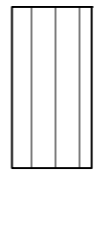
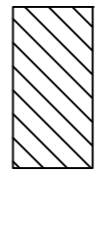
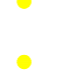
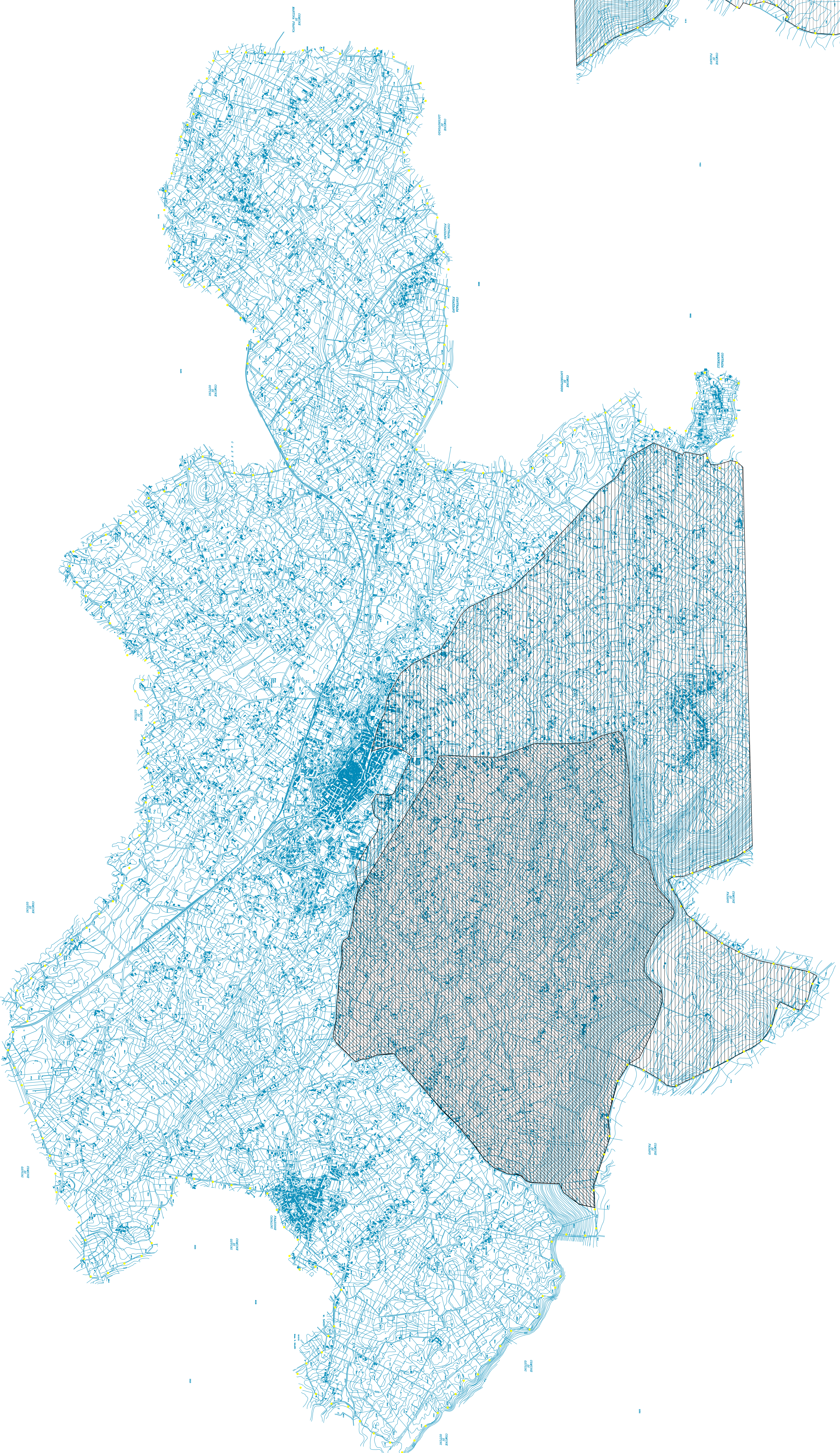


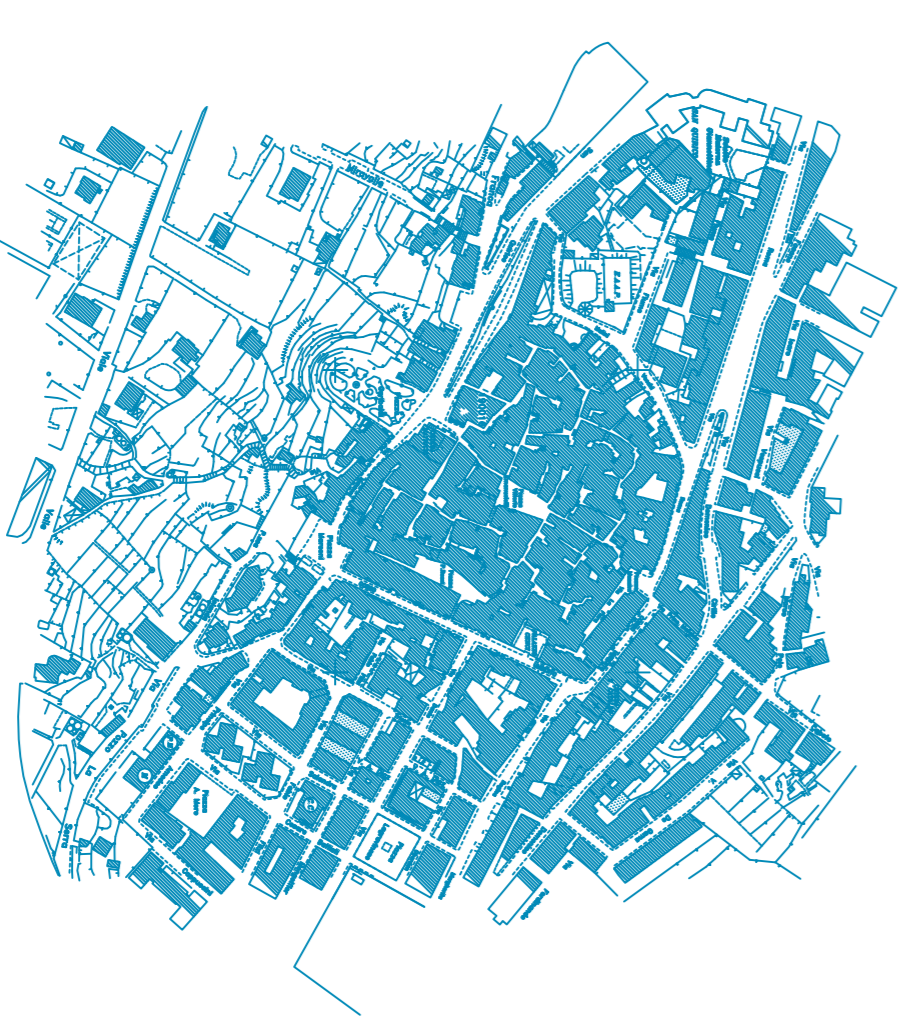
LEGENDA

-  ZONA A GESTIONE SOCIALE
-  OASI DI PROTEZIONE
-  TERRITORIO COMUNALE



COMUNE DI CISTERMINO
(PROVINCIA DI BRINDISI)

PIANO REGOLATORE GENERALE



PROGETTISTA: ARCH. GIAN LUIGI CONSULES
COLLABORATORE: ARCH. SIMONA ANELLI

TAV. 1 2 3 4 5 6 7 8

ADEGUAMENTO AL P.U.T./P. VINCOLI FAUNISTICI

RAPE: 1:10.000

TAVOLA MODIFICATA IN BASE ALLA DELIBERA DELLA GIUNTA REGIONALE N. 1928 DEL 29 DICEMBRE 2008 DI APPROVAZIONE DEFINITIVA DEL P.A.S.